

COMPUTONE

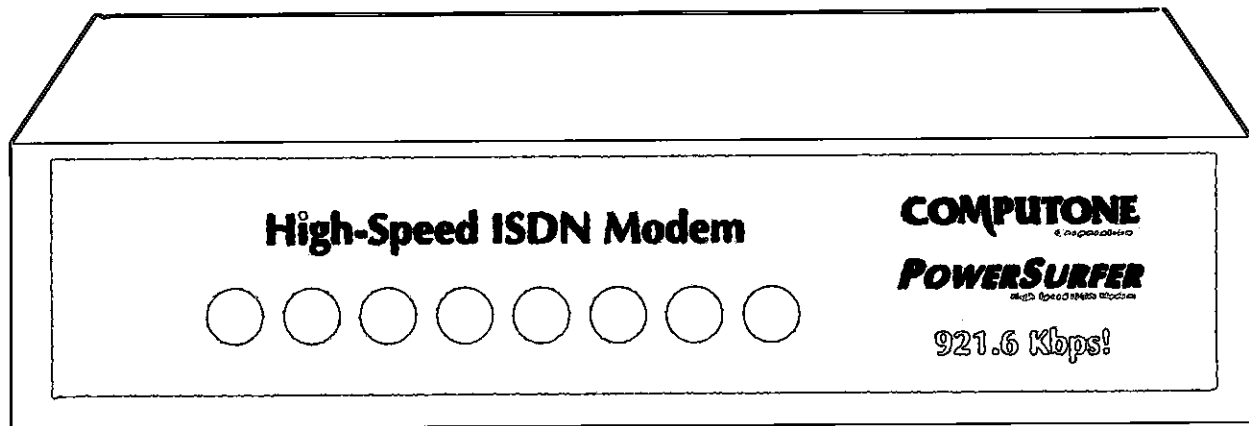
Corporation

800-241-3946 or 770-475-2725 ▲ Fax 770-664-1510

POWER SURFER

World's Fastest ISDN Modem!

- PRELIMINARY -



BRI ISDN BASIC RATE INTERFACE

"U" REFERENCE POINT INTERFACE

B-CHANNEL DATA RATES: 64KBPS

D-CHANNEL DATA RATE: 16KBPS

SERIAL INTERFACE - DATA RATES UP TO 921.6KBPS!

V.120 DATA RATE ADAPTION PROTOCOL

DATA COMPRESSION

MULTI-LINK POINT TO POINT PROTOCOL FOR B-CHANNEL BONDING

COMPATIBLE WITH NATIONAL ISDN-1, ISDN-2, AT&T 5ESS, DMS-100

AT COMMAND SET INTERFACE

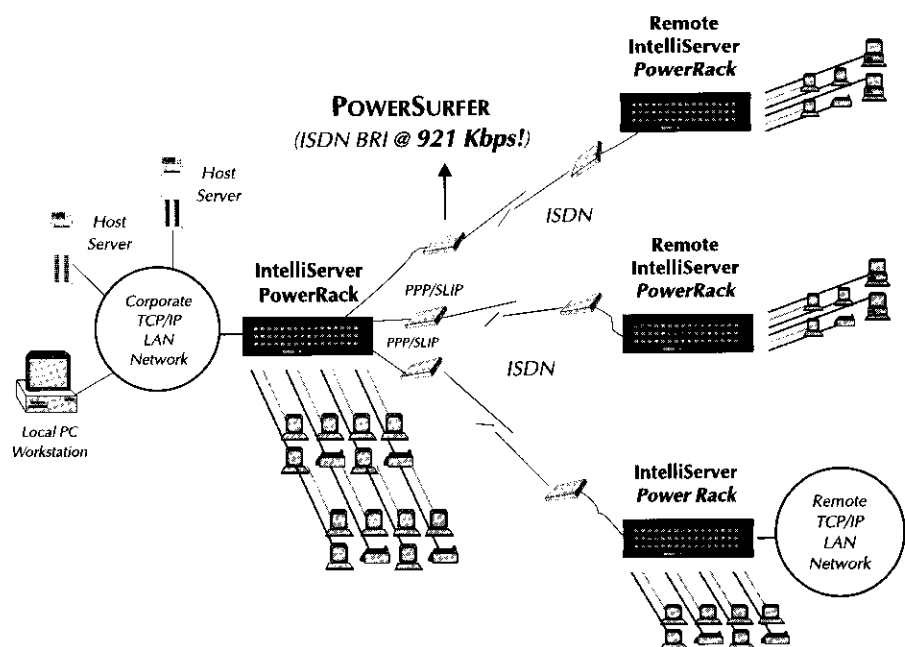
2-YEAR WARRANTY

24-HOUR BBS

FREE TECH SUPPORT

SAMPLE COMPUTONE POWERSURFER CONFIGURATION W/ INTELLISERVER POWERACK

Up to 64 PowerSurfers per PowerRack. Unlimited number of PowerRacks (local or remote) per Ethernet network. 921.6 Kbps ISDN modem speed per port!



TECH TALK

ISDN INTERFACE

Basic Rate Interface,
2B+D, "U" Reference Point

SERIAL PORT

1 High-Speed RS-232 port

CONFIGURATION

AT Command Set

SERIAL DATA RATES

Asynchronous 300-
921.6Kbps

RATE ADAPTION

V.120 Data Rate Adaption
Protocol

SWITCH COMPATIBILITY

National ISDN-1, ISDN-2,
AT&T 5ESS, DMS-100

SUPPORT/COMPLIANCE

FCC, NI-1

MODEM SIZE

6 1/4" x 5 3/4" x 1 1/2"

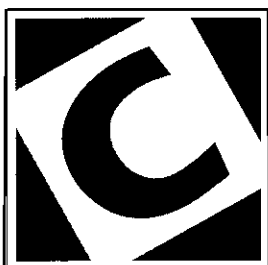
The new **PowerSurfer** is now the world's fastest ISDN modem! The Computone PowerSurfer is the ideal ISDN Terminal Adapter to utilize the high speed available with ISDN BRI connections. Using integral compression, the ISDN BRI interface can support data rates up to 512 Kbps.

Correspondingly, the serial interface supports up to 921.6 Kbps, to ensure the asynchronous serial line does not slow down the ISDN link. When used with the Computone IntelliServer *PowerRack*, which also supports 921.6 Kbps, the full ISDN bandwidth can be used.

The Computone IntelliServer PowerRack, is an asynchronous standalone remote access server which is expandable to 64 serial ports and can support 64 simultaneous PPP sessions. The PowerRack is optimum for Internet Service Providers and high-end intranet applications, and supports PPP, SLIP, CSLIP, CSLIP, RADIUS, RIP and proxyarp.

The PowerSurfer supports a standard AT Command Set interface, V.120 Rate Adaption Protocol, and MultiLink Point to Point protocol for channel bonding to combine both B channels.

Utilize the PowerSurfer to ensure you will maximize the use of your ISDN BRI links.



COMPUTONE

Corporation

Multi-Port Adapters ▲ TCP/IP Communications Servers
(770) 475-2725 or (800) 241-3946 ▲ FAX (770) 664-1510